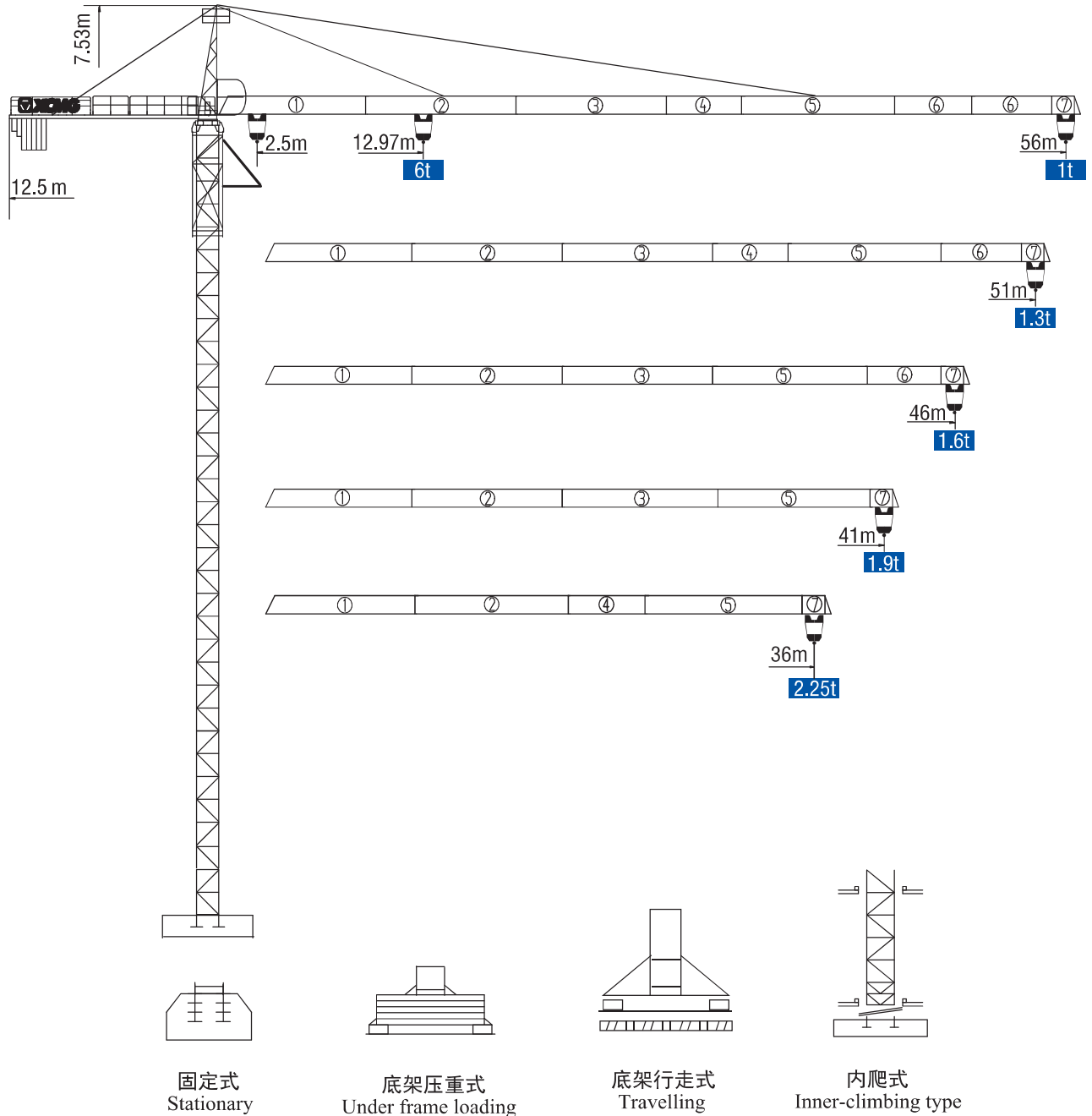


QTZ80(5610Fz-6)

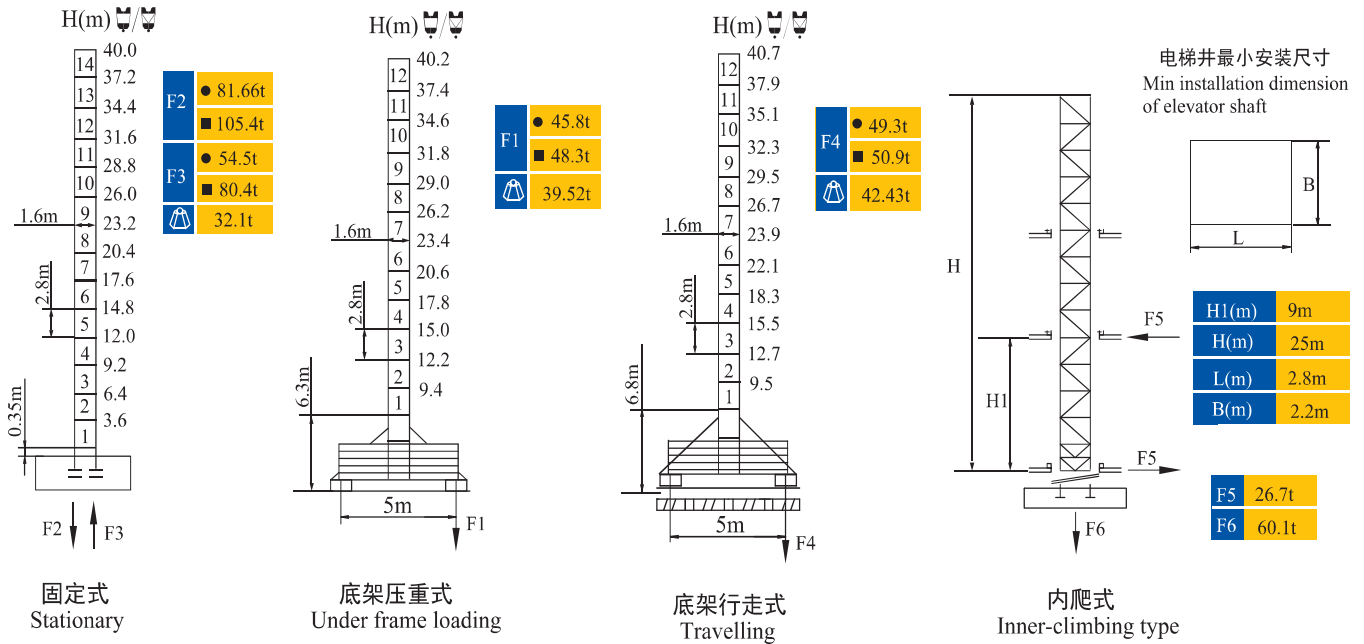


★ 可变换的其他安装方式同我们协商。 Mounting possibilities Consult us.

塔顶系列 Topkit

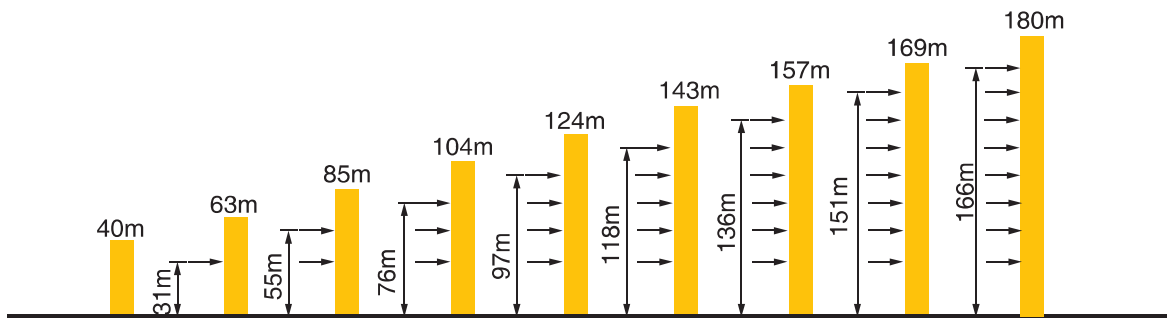
QTZ80(5610Fz-6)

塔身与反力 Masts and Reactions



H 吊钩高度 Height of the hook ● 工作状态 In service ■ 非工作状态 Out of service
 ⚖ 不含平衡重最大臂长最大工作高度时的自重 Without load and ballast with longest jib and maximum height

附着 Anchorages



★ 如需达到更高的高度，请与我们联系！For greater heights, consult us!


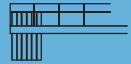

QTZ80(5610Fz-6)

起重特性 Load Diagrams

起重臂 jib	R _{min}	R(C _{max})	C _{max}	幅度 (m) Radius										
				16	21	26	31	36	41	46	51	56		
56m		2.5	24.18	3t	3000			2754	2226	1845	1556	1330	1149	1000
		2.5	12.97	6t	4755	3488	2708	2180	1799	1510	1285	1103	954	
51m		2.5	26.37	3t	3000			2474	2058	1744	1497	1300		
		2.5	14.14	6t	5263	3855	3004	2429	2013	1698	1452	1254		
46m		2.5	27.7	3t	3000			2626	2189	1858	1600			
		2.5	14.85	6t	5530	4078	3185	2580	2143	1813	1554			
41m		2.5	28.18	3t	3000			2680	2236	1900				
		2.5	15.11	6t	5636	4159	3250	2635	2190	1854				
36m		2.5	28.33	3t	3000			2695	2250					
		2.5	15.19	6t	5667	4183	3216	2653	2218					

★ 其他起重性能需求, 请与我们联系 Anyother lifting capacity, consult us.

配重配置 Counter Weights

Counter-jib ballast		2330 (kg) / 1250 (kg)		
		 (kg)	PZ2330	PZ1250
56m	12.5m	15230	6	1
51m	12.5m	13980	6	0
46m	12.5m	12900	5	1
41m	12.5m	11650	5	0
36m	12.5m	9320	4	0

QTZ80(5610Fz-6)

传动机构 Mechanisms

机构 Mechanisms	图例 Example	机构代号 Model	速度 (m/min) Speed	起重量 (t) Hoist Weight	容绳量 Rope Capacity	功率 (kW) Power	
起升 Hoisting		24QT15T		8.5	3	400m >400m*	24/24/5.4
				40	3		
				80	1.5		
				4.2	6		
				20	6		
				40	3		
变幅 Trolleying		33BDZ60	50/25m/min			3.3/2.2	
回转 Slewing		37HR100	0~0.6r/min			2×3.7	
行走 Travelling		RT	0~24m/min			2×5.2	
电源 Main Supply					~380V (±10%) 50Hz		
总功率 (不含顶升和行走) Gross Power (Excuding climbing and travelling)					34.7kW		

★ 请与我们联系 Consult us, Please.

此样本所列技术参数不受法律约束，具体请详见相应产品说明书

These specifications and data are not legally binding. For any technical information, please refer to corresponding instructions.