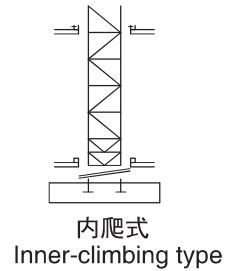
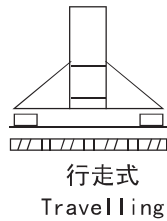
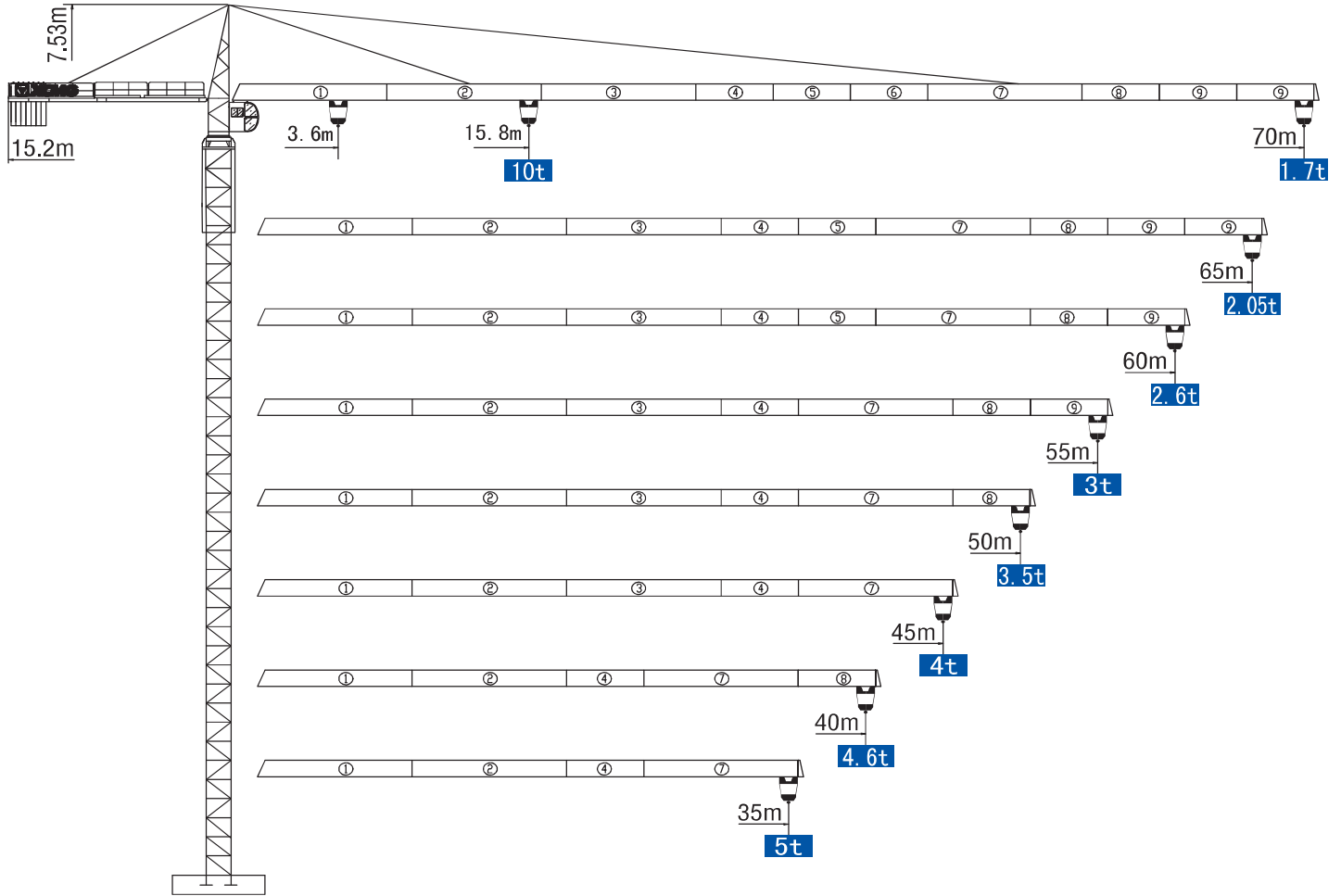


XGT160C(7017L-10)

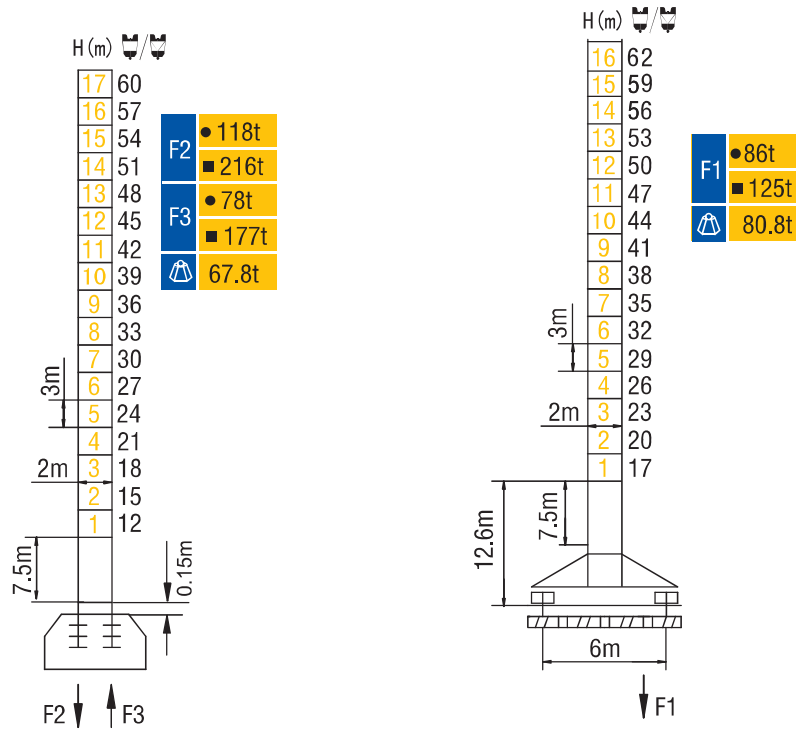


★ 可变换的其他安装方式同我们协商。 Mounting possibilities Consult us.

塔顶系列 Topkit

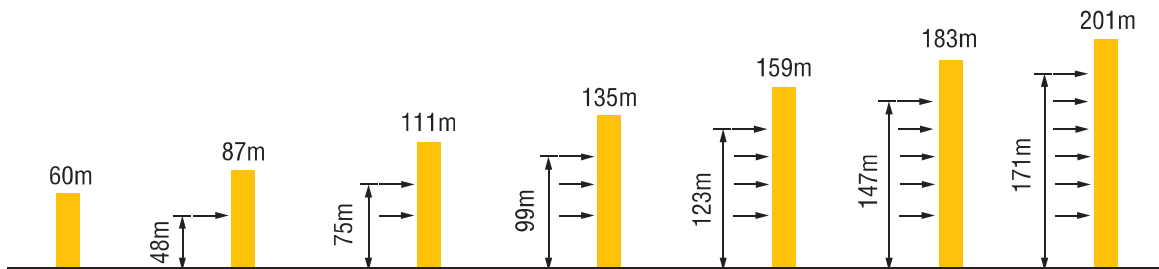
XGT160C(7017L-10)

塔身与反力 Masts and Reactions



H 吊钩高度 Height of The Hook ● 工作状态 In-service ■ 非工作状态 Out-of-Service
 ⚙️ 最大臂长最大独立高度时的整机自重（不含配重、压重、吊重）
 Weight with max free-standing height and max jib (without counter-weight and load)

附着 Anchorages



★ 如需达到更高的高度，请与我们联系。For greater heights, consult us.

XGT160C(7017L-10)

起重特性 Load Diagrams

起重臂 (m) Jib	R _{min}	R (C _{max})	C _{max}	幅度 (m) Radius													
				15	20	25	30	35	40	45	50	55	60	65	70		
70m		4.4	30	5t	5000					4165	3542	3061	2678	2366	2106	1887	1700
		3.6	15.8	10t	10000	7543	5722	4527	3684	3057	2571	2185	1871	1609	1389	1200	
65m		4.4	31.8	5t	5000					4471	3809	3298	2890	2558	2283	2050	
		3.6	16.7	10t	10000	8085	6151	4883	3987	3321	2806	2396	2062	1784	1550		
60m		4.4	35.1	5t	5000					4289	3723	3272	2905	2600			
		3.6	18.4	10t	10000	9064	6927	5525	4535	3799	3229	2776	2407	2100			
55m		4.4	36	5t	5000					4421	3840	3377	3000				
		3.6	18.9	10t	10000	9328	7136	5698	4683	3928	3344	2879	2500				
50m		4.4	37.1	5t	5000					4575	3977	3500					
		3.6	19.4	10t	10000	9640	7383	5903	4858	4080	3479	3000					
45m		4.4	37.3	5t	5000					4602	4000						
		3.6	19.5	10t	10000	9690	7422	5935	4885	4104	3500						
40m		4.4	37.3	5t	5000					4600							
		3.6	19.5	10t	10000	9682	7416	5930	4881	4100							
35m		4.4	35	5t	5000												
		3.6	19.5	10t	10000	9716	7443	5953	4900								

★其他起重性能需求，请与我们联系。 Any other lifting capacity, consult us.

配重配置 Counter Weights

Counter-jib ballast		4150(kg) / 3500(kg) / 2000(kg)			
		(kg)	PZ4150	PZ3500	PZ2000
70m	15.2m	26250	5	1	1
65m	15.2m	24250	5	1	0
60m	15.2m	22750	5	0	1
55m	15.2m	20100	4	1	0
50m	15.2m	18600	4	0	1
45m	15.2m	16600	4	0	0
40m	15.2m	13800	2	1	1
35m	15.2m	12450	3	0	0

XGT160C(7017L-10)

传动机构 Mechanisms

机构 Mechanisms	图例 Example	机构代号 Model	速度 (m/min) Speed	起重量 (t) Hoist Weight	容绳量 Rope Capacity	功率 (kW) Power	
起升 Hoisting		45JLF25A		0~40	5	615m >615m [★]	45
				0~60	3.5		
				0~80	1.7		
				0~20	10		
				0~30	7		
				0~40	3.5		
变幅 Trolleying		4JXF4	0-58m/min			4	
回转 Slewing		145HL120	0-0.6r/min			2×7.5	
行走 Travelling		RT	0-25m/min			4×4	
电源 Main Supply					~380V (±10%) 50Hz		
总功率 (不含顶升和行走) Gross Power (Excuding climbing and travelling)					64kW		

★ 请与我们联系。Consult us, Please.

此样本所列技术参数不受法律约束，具体请详见相应产品说明书。

These specifications and data are not legally binding. For any technical information, please refer to corresponding instructions.