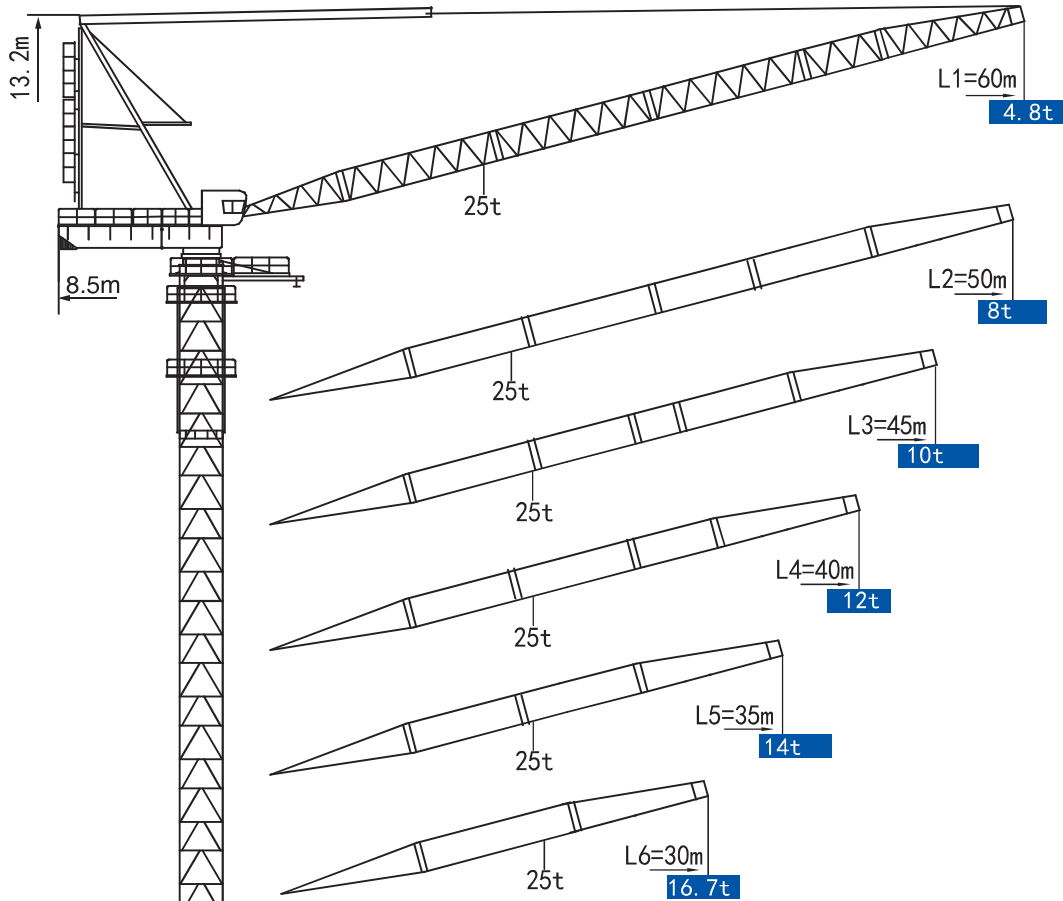


XGTL500(6048-25)



固定式
Stationary

行走式
Travelling

门座式
portal type

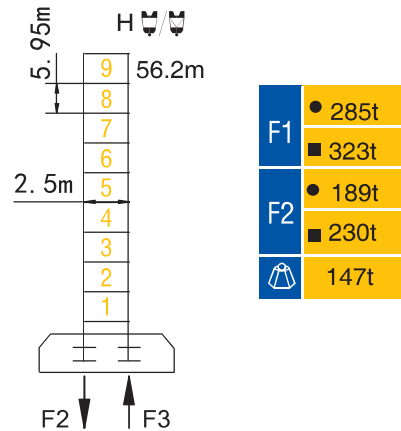
内爬式
Inner-climbing type

★ 可变换的其他安装方式同我们协商。 Mounting possibilities Consult us.

动臂系列 Luffing

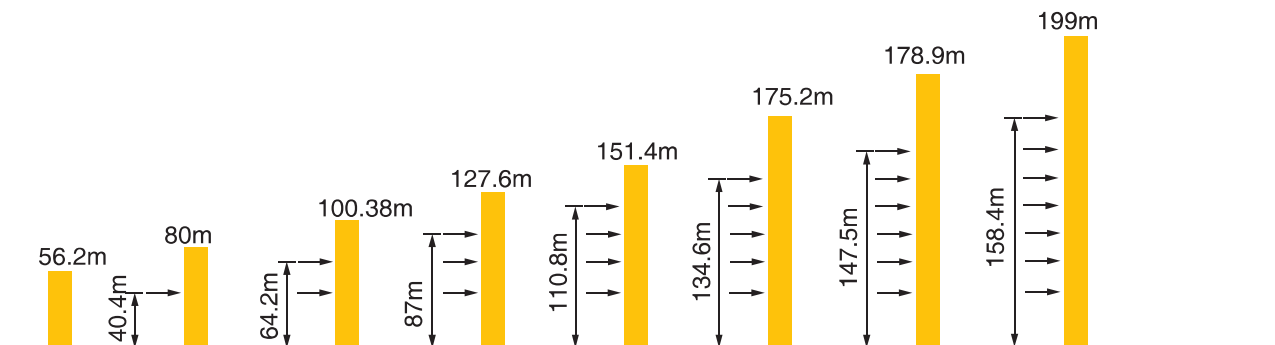
XGTL500(6048-25)

塔身与反力 Masts and Reactions



H 臂根铰点高度 Height of hinged point at jib root ● 工作状态 In service ■ 非工作状态 Out of service
 ⚠️ 最大臂长最大独立高度时的整机自重 (不含配重、压重、吊重)
 Weight with max free-standing height and max jib (without counter-weight and load)















附着 Anchorages



★ 如需达到更高的高度，请与我们联系。For greater heights, consult us.


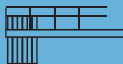

XGTL500(6048-25)

起重特性 Load Diagrams

幅度 (m) Range	R_{min}	$R(C_{max})$	C_{max}	5.5~20	25	30	35	40	45	50	55	60	
60m		6.4	35.4	12500	12500				10308	8436	6956	5764	4800
		6.4	21.3	25000	25000	20231	15614	12354	9938	8085	6629	5468	4551
55m		6.0	35.8	12500	12500				10560	8716	7261	6100	
		6.0	21.4	25000	25000	20371	15814	12598	10217	8395	6969	5854	
50m		5.5	37.5	12500	12500				11383	9486	8000		
		5.5	22.1	25000	25000	21526	16830	13518	11069	9200	7757		
45m		5.1	38.6	12500	12500				11891	10000			
		5.1	22.6	25000	25000	22086	17377	14058	11611	9761			
40m		4.6	38.8	12500	12500				12000				
		4.6	22.5	25000	25000	22011	17391	14143	11765				
35m		4.2	35.0	12500	12500								
		4.2	22.1	25000		21535	17100	14000					
30m		3.7	30.0	12500	12500								
		3.7	21.6	25000	25000	20942	16700						

★ 其他起重性能需求，请与我们联系。 Anyother lifting capacity, consult us.

配重配置 Counter Weights

Counter-jib	ballast	5714(kg)	
		 (kg)	PZ 5714
60m	8.5m	40000	7
50m	8.5m	40000	7
45m	8.5m	40000	7
40m	8.5m	40000	7
35m	8.5m	40000	7
30m	8.5m	40000	7

XGTL500(6048-25)

传动机构 Mechanisms

机构 Mechanisms	图例 Example	机构代号 Model	速度 (m/min) Speed	起重量 (t) Hoist Weight	容绳量 Rope Capacity	功率 (kW) Power	
起升 Hoisting		90LVF125DB		0~38	12.5	900m > 900m*	90
				0~76	6.2		
				0~152	1.64		
				0~19	25		
				0~38	12.5		
				0~76	4.14		
变幅 Luffing		90DVF85B	≤3 min		90		
回转 Slewing		11RVF	0~0.6 r/min		2×11		
行走 Travelling		RT	0~25m/min		6×5.2		
电源 Main Supply					~380 (±10%) 50Hz		
总功率 (不含顶升和行走)		Gross Power (Excuding climbing and travelling)			202kW		

★ 请与我们联系。Consult us, Please.

本样册技术参数不受法律约束，具体以相应产品说明书为准。

These brochure of specifications and data are not legally binding, specific instructions please based on our product manuals.