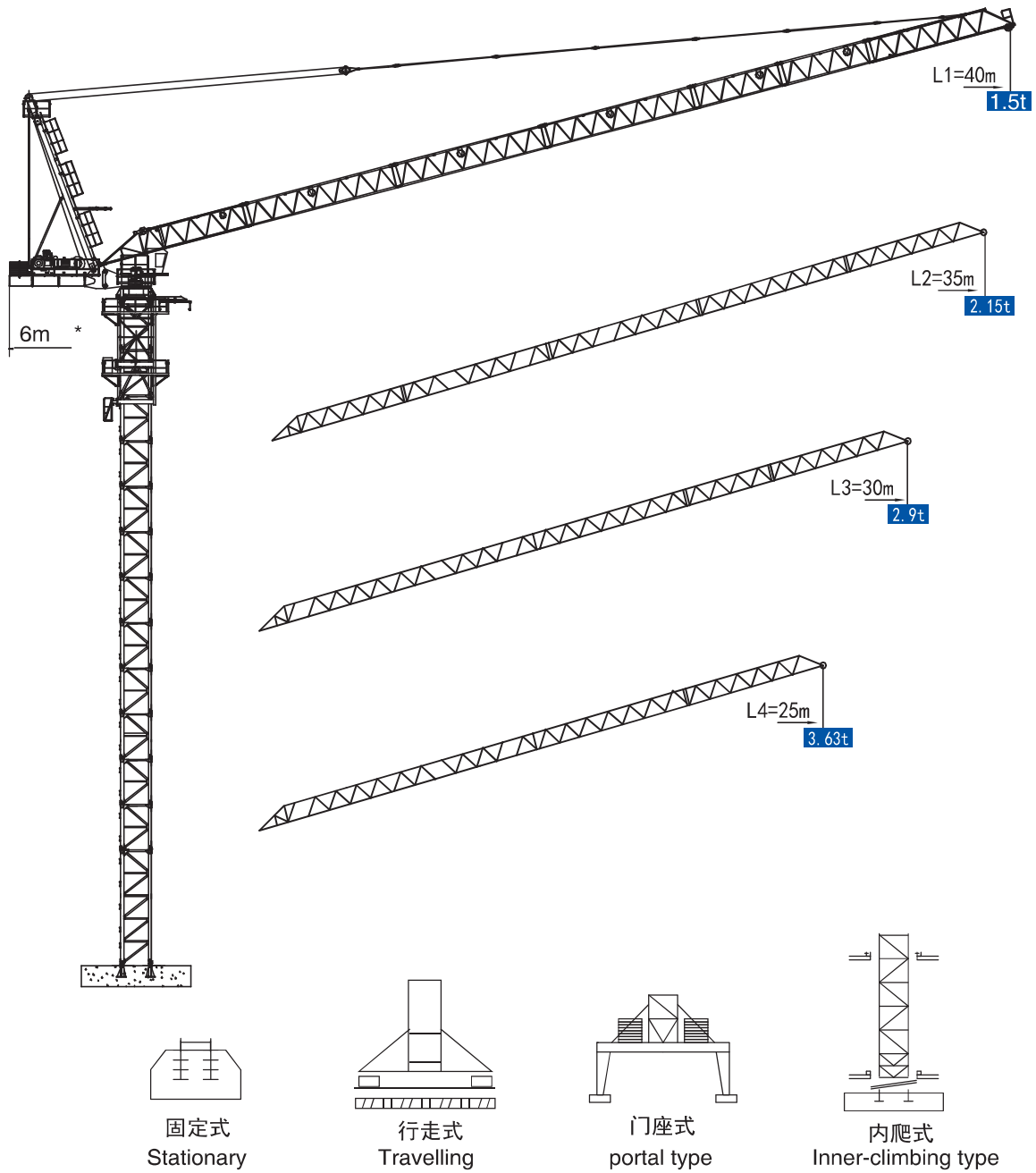


XL4015L-6

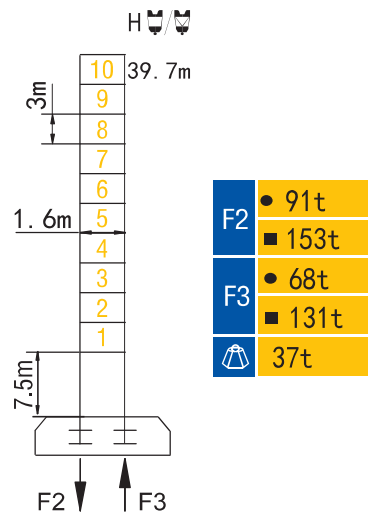


★ 可变换的其他安装方式同我们协商。 Mounting possibilities Consult us.

动臂系列 Luffing

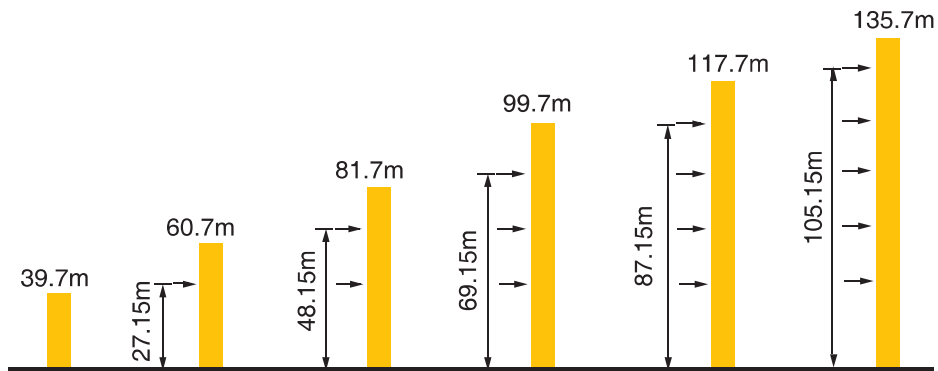
XL4015L-6

塔身与反力 Masts and Reactions



H 臂根铰点高度 Height of hinged point at jib root ● 工作状态 In service ■ 非工作状态 Out of service
 ⚠ 最大臂长最大独立高度时的整机自重 (不含配重、压重、吊重)
 Weight with max free-standing height and max jib (without counter-weight and load)









附着 Anchorages



* 如需达到更高的高度, 请与我们联系。 For greater heights, consult us.


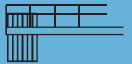

XL4015L-6

起重特性 Load Diagrams

起重臂长 Jib length	R_{min}	$R(C_{max})$	C_{max}	15	20	25	30	35	40	
40m		3.685	27	3000	3000			2558	1972	1500
		3.685	16.1	6000	6000	4558	3331	2495	1890	1433
起重臂长 Jib length	R_{min}	$R(C_{max})$	C_{max}	15	20	25	30	35		
35m		3.162	28	3000	3000			2781	2150	
		3.162	16.7	6000	6000	4799	3551	2701	2084	
起重臂长 Jib length	R_{min}	$R(C_{max})$	C_{max}	15	20	25	30			
30m		2.639	29	3000	3000			2900		
		2.639	17.12	6000	6000	4962	3699	2835		
起重臂长 Jib length	R_{min}	$R(C_{max})$	C_{max}	15	20	25				
25m		2.12	25	3000	3000					
		2.12	16.81	6000	6000	4871	3630			

★ 其他起重性能需求，请与我们联系！ Anyother lifting capacity, consult us!

配重配置 Counter Weights

Counter-jib ballast		1600(kg)/2300(kg)		
		 (kg)	PZ1600	PZ2300
40m	6m	6200	1	2
35m	6m	6200	1	2
30m	6m	6200	1	2
25m	6m	6200	1	2

XL4015L-6

传动机构 Mechanisms

机构 Mechanisms	图例 Example	机构代号 Model	速度 (m/min) Speed	起重量 (t) Hoist Weight	容绳量 Rope Capacity	功率 (kW) Power	
起升 Hoisting		22JLF15		0~37.5	3	400m >400m *	22
				0~56	2		
				0~75	1		
				0~18.7	6		
				0~28	4		
				0~37.5	2		
变幅 Luffing		22JDF25B	≤2.8 min			22	
回转 Slewing		55HP120	0~0.6r/min			5.5	
行走 Travelling		RT	0~24m/min			2×5.2	
电源 Main Supply					~380 (±10%) 50Hz		
总功率 (不含顶升和行走) Gross Power (Excuding climbing and travelling)						49.5kW	

★ 请与我们联系。Consult us, Please.

此样本所列技术参数不受法律约束，具体请详见相应产品说明书。

These specifications and data are not legally binding. For any technical information, please refer to corresponding instructions.