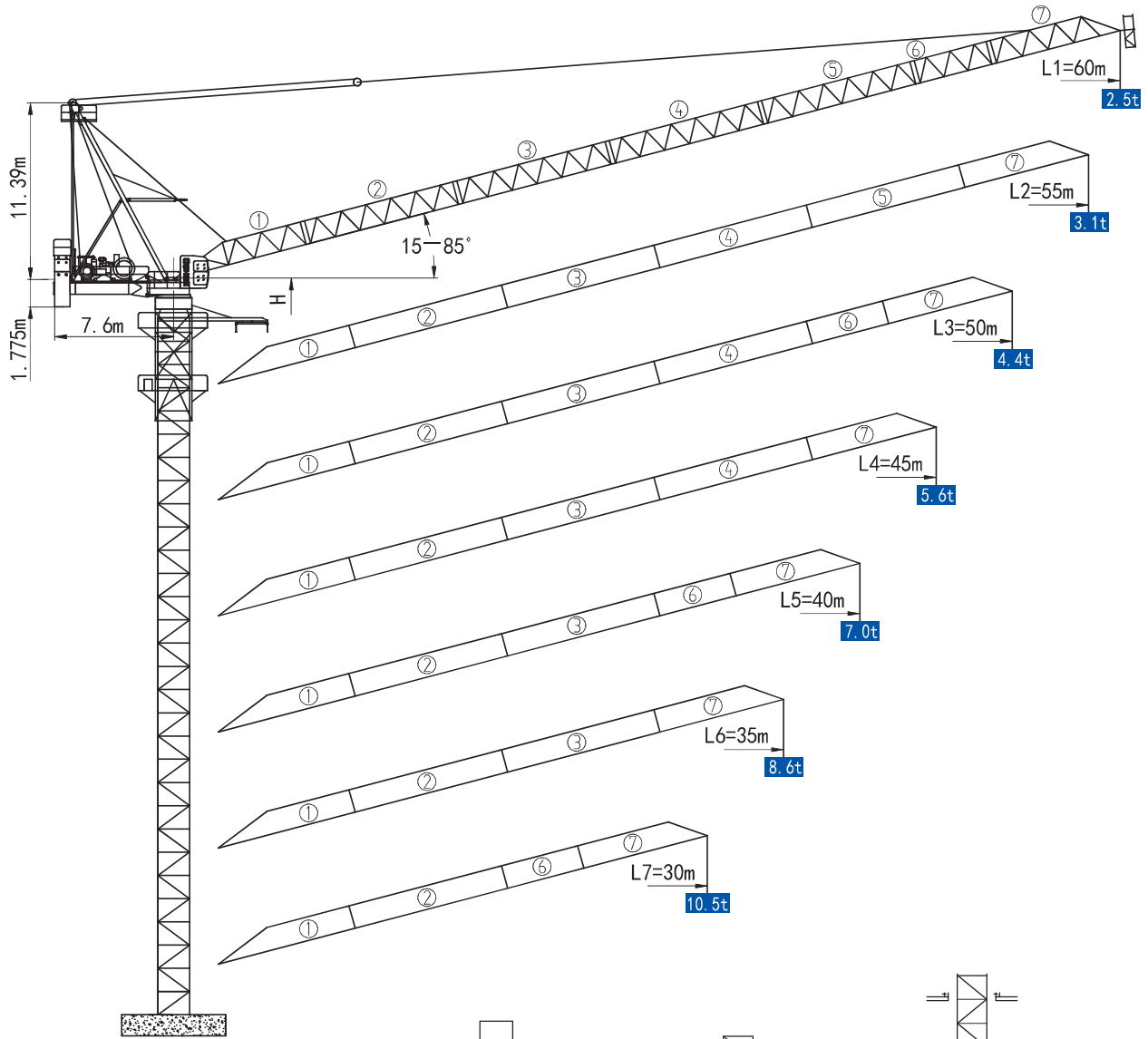


XL6025-16



固定式
Stationary

行走式
Travelling

门座式
portal type

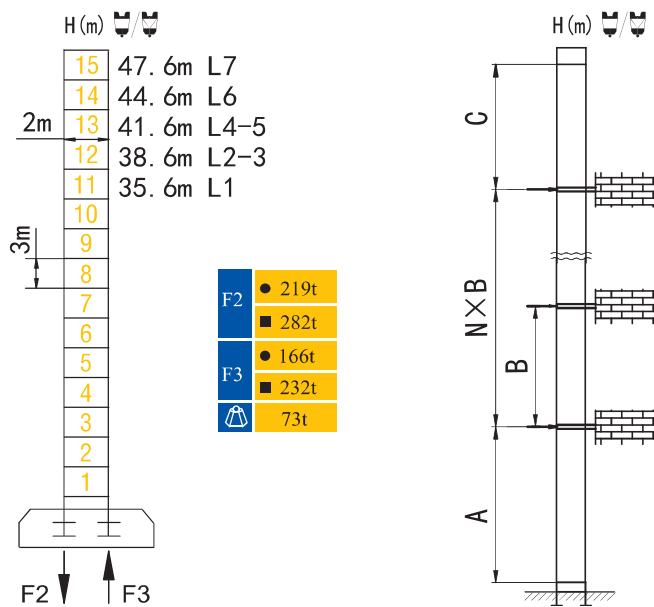
内爬式
Inner-climbing type

★ 可变换的其他安装方式同我们协商。 Mounting possibilities Consult us.

动臂系列 Luffing

XL6025-16

塔身与反力 Masts and Reactions



起重臂长 Jib length	A (m)	B (m)	C (m)	H _{max} (m)
L7	37.5	27	34.5	266.6
L6	34.5	24	31.5	260.6
L5	31.5	21	28.5	254.6
L4	31.5	21	28.5	251.6
L3	28.5	18	25.5	245.6
L2	28.5	18	25.5	239.6
L1	25.5	15	22.5	236.6

N 附着道数 Number of tie collars

$$H = A + N \times B + C + 2.6$$

塔身节数量 Number of masts = $(H - 2.6) / 3$

H 臂根铰点高度 Height of hinged point at jib root ● 工作状态 In service ■ 非工作状态 Out of service

△ 最大臂长最大独立高度时的整机自重 (不含配重、压重、吊重)

Weight with max free-standing height and max jib (without counter-weight and load)

XL6025-16









起重特性 Load Diagrams

起重臂 Jib	R(C _{max})	C _{max}	幅度 (m) Range	5.51	15	20	25	30	35	40	45	50	55	60	
60m 	32.24m	8t	起重重量 (kg) Load	8000						7058	5679	4609	3760	3071	2500
起重臂 Jib	R(C _{max})	C _{max}	幅度 (m) Range	5.08	15	20	25	30	35	40	45	50	55		
55m 	31.50m	8t	起重重量 (kg) Load	8000						6843	5535	4527	3734	3100	
	23.28m	12t		12000			10936	8494	6743	5435	4427	3634	3000		
	21.14m	13.5t		13500			10836	8394	6643	5335	4327	3534	2900		
起重臂 Jib	R(C _{max})	C _{max}	幅度 (m) Range	4.64	15	20	25	30	35	40	45	50			
50m 	33.68m	8t	起重重量 (kg) Load	8000						7582	6232	5200	4400		
	24.69m	12t		12000			11836	9296	7482	6132	5100	4300			
	19.45m	16t		16000		15510	11736	9196	7382	6032	5000	4200			
起重臂 Jib	R(C _{max})	C _{max}	幅度 (m) Range	4.20	15	20	25	30	35	40	45				
45m 	35.02m	8t	起重重量 (kg) Load	8000						6641	5600				
	25.52m	12t		12000			9750	7908	6541	5500					
	20.08m	16t		16000		12233	9650	7808	6441	5400					
起重臂 Jib	R(C _{max})	C _{max}	幅度 (m) Range	3.77	15	20	25	30	35	40					
40m 	36.22m	8t	起重重量 (kg) Load	8000						7000					
	26.03m	12t		12000			10120	8270	6900						
	20.51m	16t		16000		12621	10020	8170	6800						
起重臂 Jib	R(C _{max})	C _{max}	幅度 (m) Range	3.33	15	20	25	30	35						
35m 	35.88m	8t	起重重量 (kg) Load	8000											
	26.55m	12t		12000			10335	8500							
	20.70m	16t		16000		12816	10235	8400							
起重臂 Jib	R(C _{max})	C _{max}	幅度 (m) Range	2.90	15	20	25	30							
30m 	31.05m	8t	起重重量 (kg) Load	8000											
	26.47m	12t		12000			10500								
	20.82m	16t		16000		12955	10400								

★ 其他起重性能需求，请与我们联系。 Any other lifting capacity, consult us.

XL6025-16

传动机构 Mechanisms

机构 Mechanisms	图例 Example	机构代号 Model	速度 (m/min) Speed	起重量 (t) Hoist Weight	容绳量 Rope Capacity	功率 (kW) Power
起升 Hoisting		75JLF40	 0~45	8	804m >804m [★]	75
			 0~64	4		
			 0~90	2		
起升 Hoisting		75JLF40	0~30	12	804m >804m [★]	75
			0~43	6		
			0~60	3		
起升 Hoisting		75JLF40	0~22.5	16	804m >804m [★]	75
			0~32	8		
			0~45	4		
变幅 Luffing		45JDF40BX	≤ 3 min			45
回转 Slewing		JH12GT6	0~0.7 r/min			2×9
行走 Travelling		RT	0-25m/min			4×4
电源 Main Supply					~380V (±10%) 50Hz	
总功率 (不含顶升和行走) Gross Power (Excuding climbing and travelling)					138kW	

★ 请与我们联系。Consult us, Please.

此样本所列技术参数不受法律约束，具体请详见相应产品说明书。

These specifications and data are not legally binding. For any technical information, please refer to corresponding instructions.